

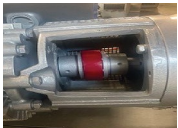
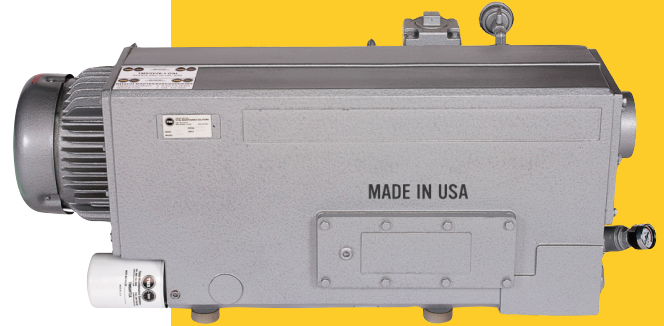
# TMSRV165, 205, 255, 305

OEM: TMSRV165 | CFM 117 | HP 7.5

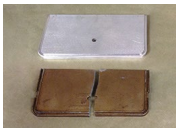
OEM: TMSRV205 | CFM 141 | HP 7.5

OEM: TMSRV255 | CFM 180 | HP 10

OEM: TMSRV305 | CFM 194 | HP 10



**Innovative, state-of-the-art quick change coupling**  
(no need to remove the motor to change the coupler element)



**Billet aluminum vs. cast aluminum for the dam wall** (reduces metal fatigue)



**Metal oil lines and fittings vs. plastic**



**Billet aluminum exhaust filter hangers vs. cast aluminum** (reduces metal fatigue)



**Steel exhaust valves vs. plastic** (less deterioration)



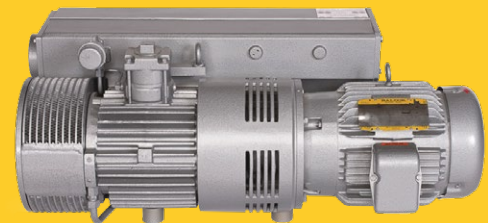
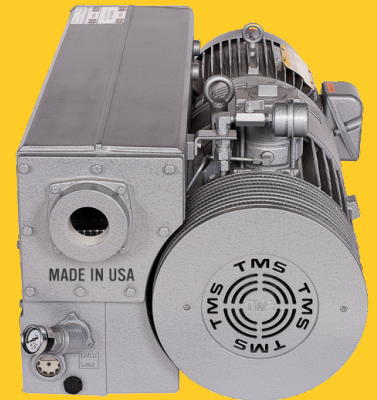
**Billet aluminum motor adapter vs. cast aluminum** (eliminates oxidation)



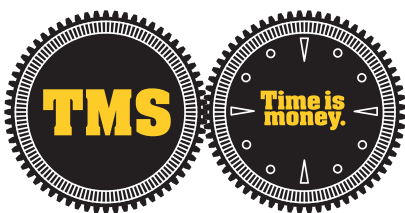
**One-piece lip seal cartridge vs. two**



**Rotors made from solid USA steel vs. cast steel** (longer life/more uniform for better balance)



- ▶ Substantially longer life between rebuilds – USA Steel and Aluminum
- ▶ More durable material than used by competitors – USA vs Import
- ▶ Interior oil return float with fewer parts to fail
- ▶ Trade in your old pump for credit towards a new TMS 'Made in the USA' pump



**TMSVacuum.com**  
Rock Island, Illinois

**Total Maintenance Solutions**



**MADE IN  
USA**

We stock all your vacuum and booster replacement parts, filters, and oil.  
Order by 2pm and ships same day.

**309-756-0955**