

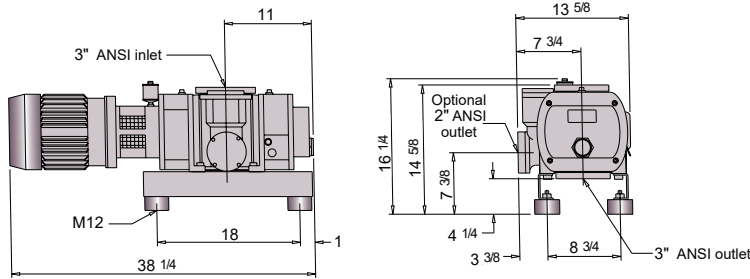
# Vacuum Boosters

## TMS RL500-1000

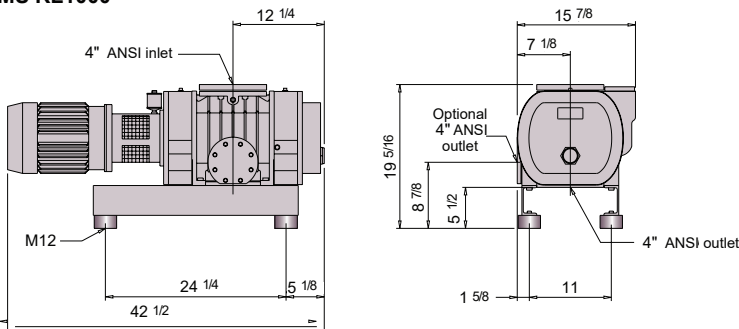
### Dimensional Drawing

All dimensions in inches unless otherwise noted.

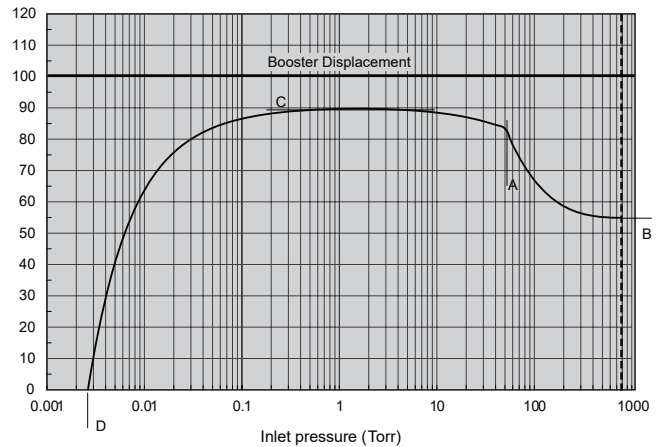
#### TMS RL500



#### TMS RL1000



### Booster/Pump Characteristic Curve



Actual performance curve will depend on the booster model, the backing pump performance curve, and additional factors.

- A = Bypass valve cracking point - Dependent on differential pressure of valve and the volumetric ratio (V1/V2) (booster/pump).
- B = Flow @ atmospheric pressure - Dependent primarily on backing pump capacity.
- C = Nominal flow of booster - Dependent primarily on the displacement of the booster and the capacity of the backing pump selected
- D = Ultimate pressure - Dependent primarily on the ultimate pressure of the vacuum pump selected and the volumetric ratio.

Consult the factory for actual curve and application of vacuum boosters.

Technical Data	UOM	TMS RL500	TMS RL1000
Nominal Displacement	CFM	353	765
Maximum Leak Rate	Torr-CFM	$2.8 \times 10^{-2}$	$2.8 \times 10^{-2}$
Maximum Differential Pressure	Torr	40	32
Motor Size	HP	3	5
Rotational Speed	RPM	3600	3600
Approximate Module Weight	Lbs	315	520
Oil Capacity	Qt	1.25	3.2

All performance data is based on ambient conditions of 14.7 PSIA and 70 °F, and has a tolerance of +/- 10%.



Learn more by scanning here or contacting us at [info@tmsvacuum.com](mailto:info@tmsvacuum.com)  
 Trust the **TMS Difference.** | [tmsvacuum.com](http://tmsvacuum.com)